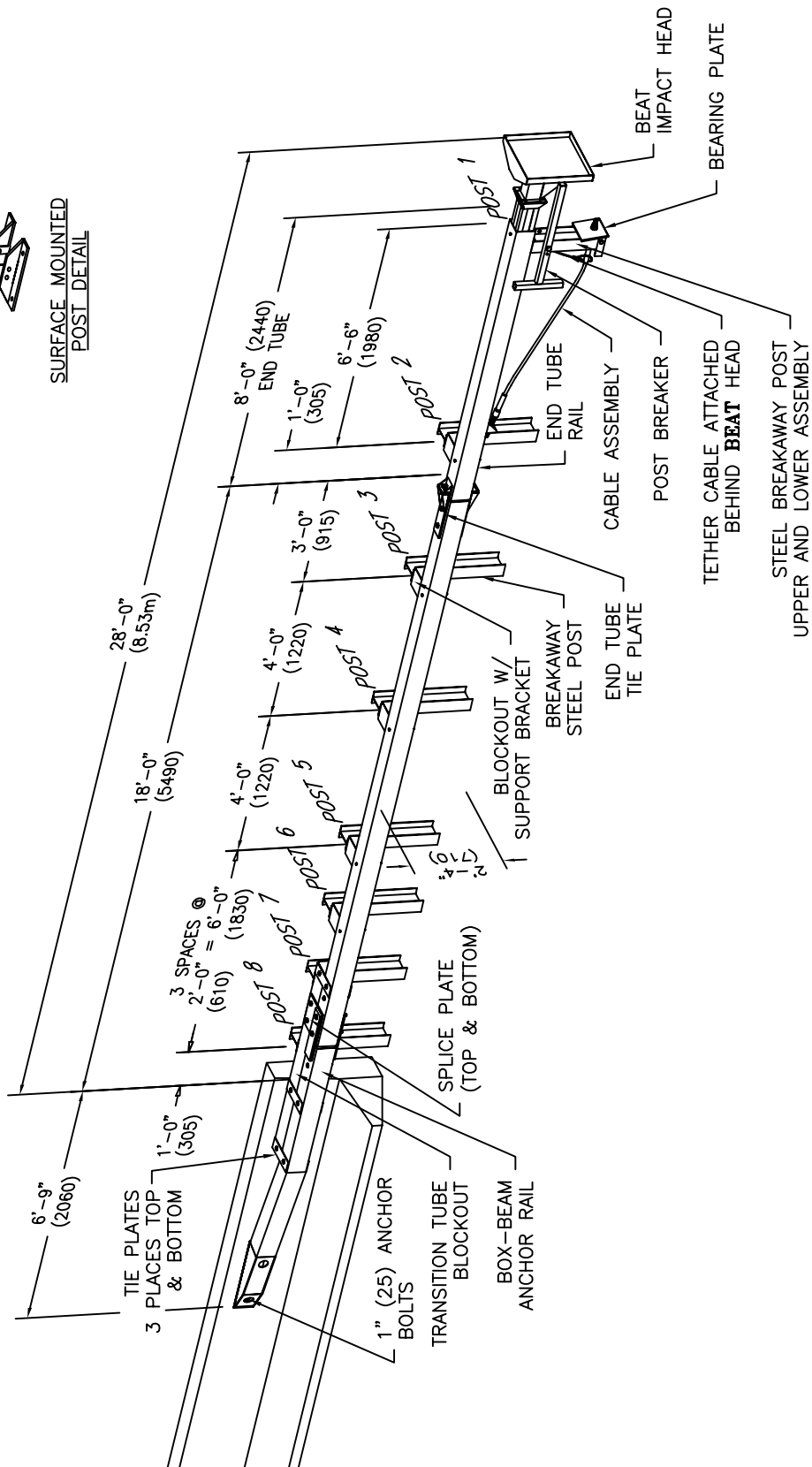


SURFACE MOUNTED POST DETAIL



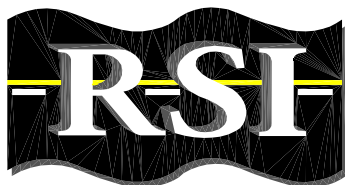
NOTES:

1. CAN BE INSTALLED WITH GROUND MOUNTED POSTS IN THE SOIL OR SURFACE MOUNTED POSTS WITH ANCHOR BOLTS.
2. CAN BE ATTACHED TO SAFETY SHAPE BARRIER OR VERTICAL WALL.

SYSTEM	SCI13a	SCI13b
POSTS	GROUND MOUNT	SURFACE MOUNT

2005

BEAT-SSCC - Single Sided Crash Cushion



Road Systems Inc.

SCI13a&b

SHEET NO.	DATE
1 of 2	8-16-05

INTENDED USE

The **BEAT-SSCC** (Single Sided Crash Cushion) is an energy-absorbing Crash Cushion that is supported by one steel breakaway end post and seven steel breakaway line posts and attaches directly to bridge abutments, rigid barrier ends and many bridge rails. The BEAT-SSCC is 28 feet (8.5m) long and offers a cost effective alternative for many locations. It was crash tested on the backside making it applicable for unidirectional and bidirectional applications.

During end-on impacts, the vehicle forces the mandrel portion of the BEAT-SSCC impact head into the end of the box beam section causing the tube to burst. The four walls of the tube are then peeled back. The end tube wall thickness is 1/8" (3mm), which is thinner than the 3/16" (5mm) downstream box beam.

The BEAT-SSCC is a cable-anchored system. When impacted on the traffic side within the length of need and within design limits, the BEAT-SSCC contains and redirects the errant vehicle back toward its original travel path. A gusset plate is welded to the end tube section to anchor the downstream end of the cable. The cable is bolted into place for traffic face redirection impacts. The tension in the cable is released for end-on impacts when breakaway post #1 is fractured.

There are options for the breakaway posts. The BEAT-SSCC is approved by the FHWA with either ground mounted or surface mounted steel breakaway posts.

APPROVALS

FHWA approval (CC-69B) February 22, 2002 - BEAT-SSCC NCHRP 350 Test Level 3
FHWA approval (CC-69D) July 16, 2004 - BEAT-SSCC with surface mounted posts

CONTACT INFORMATION

Road Systems, Inc.
3616 Howard County Airport
Big Spring, Texas 79720
Phone 432-263-2435
Fax 432-267-4039
www.roadsystems.com

BEAT-SSCC – Single Sided Crash Cushion

SCI13a&b



Road
Systems
Inc.

SHEET NO.

DATE

2 of 2

8-16-05